

BLAUPUNKT

BLAUPUNKT
Brand
established
1924
GERMANY



Enjoy it.



Product catalogue Ex-EU



Index

Advanced Power Solutions at a glance	4	Specialty batteries	
APS key facts	5	Coin Lithium	26
The BLAUPUNKT success story	7	Cylindrical Lithium	30
BLAUPUNKT today	8	Micro Alkaline	32
		Zinc Air - hearing aid batteries	34
Primary batteries		Rechargeable batteries & chargers	
Lithium ULTIMATE	12	Rechargeable batteries	38
Alkaline PREMIUM	14	Chargers	40
Alkaline POWER	18		
Zinc Carbon ESSENTIAL	22	Power banks	43
		Displays & POS materials	49

Advanced Power Solutions at a glance



1970

Founded in Tessenderlo (BE)



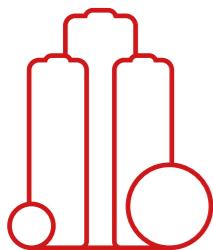
One of the **biggest** consumer battery manufacturers in Europe



Long term experience

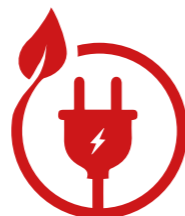


Battery expert
▶ energy solutions beyond batteries



Key products:

- Alkaline
- Zinc carbon
- Ni-MH
- Specialties
- Power banks



Sustainable solutions:

- Plastic free packaging
- Pre-charged with solar energy



Retail



Wholesale



Discount



E-commerce

Multi-channel presence and trusted OEM supplier

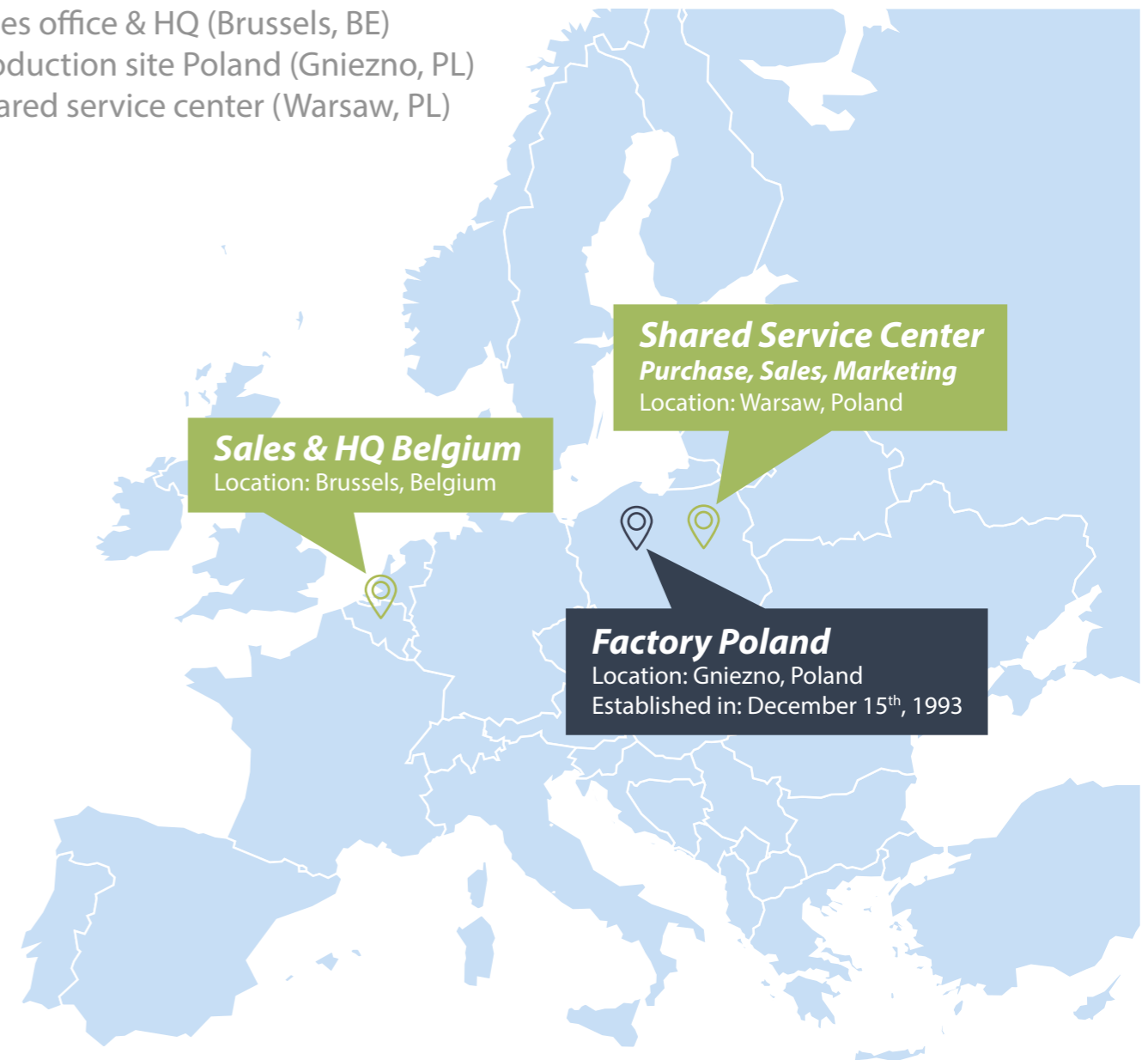


ca. 500

Active consumer base in over 50 countries

APS Key Facts

- Sales office & HQ (Brussels, BE)
- Production site Poland (Gniezno, PL)
- Shared service center (Warsaw, PL)



Dedicated sales teams across Europe:

- Benelux
- France
- Germany
- Italy
- Nordics
- Poland
- Spain
- UK



The Blaupunkt Success Story

It all started with the blue dot

1924

A company named "Ideal" was first founded in Berlin when radio was still in its infancy. Every unit was carefully tested by technicians and labeled with a seal for quality – the blue dot. It did not take long before customers simply asked for the "bluepoint" (which means in German BLAUPUNKT) products. The blue dot quickly became a symbol of outstanding quality.

1932

The First Car Radio worldwide was launched by Blaupunkt.

1938

The dot became a trademark and the company name – Blaupunkt (which means blue dot).

1959

Delivery of the one millionth car radio.

Until 1996

A full range of consumer electronics and car multimedia was successfully distributed in more than 50 countries.

1996

Blaupunkt began focusing on developing and producing high quality and innovative car multimedia units.

2010

Back in consumer electronics | Blaupunkt Global brand community.

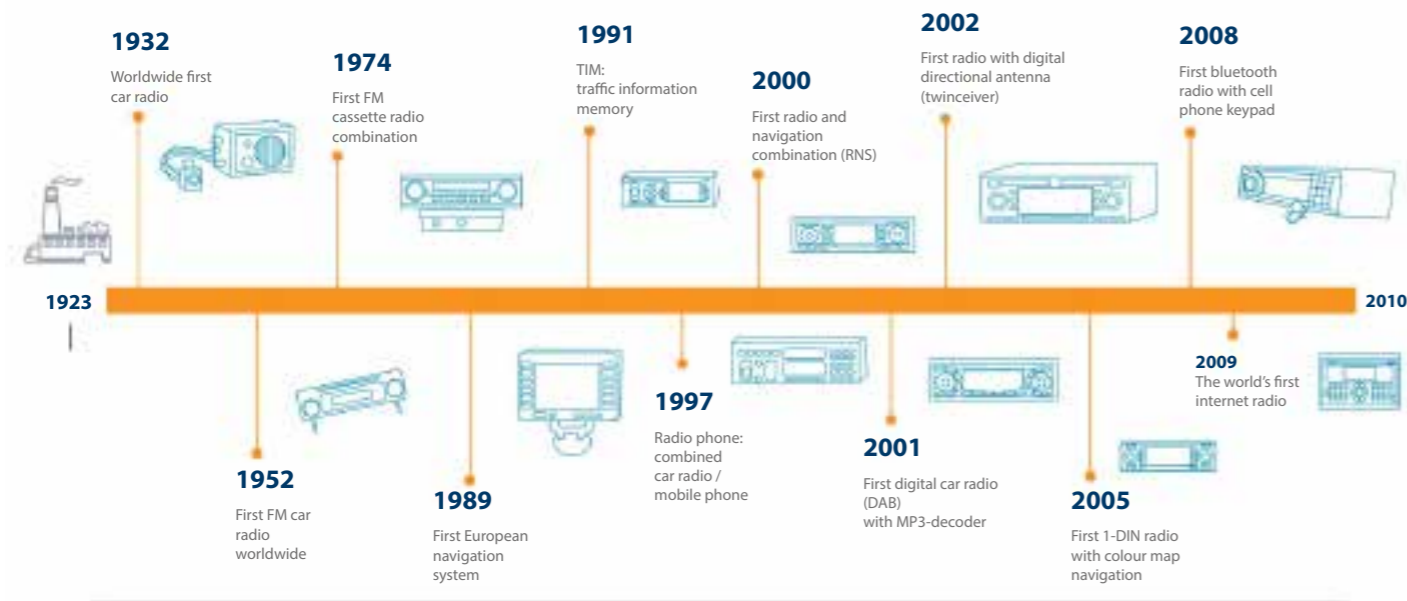
2015

Blaupunkt have been awarded as the "Brand of the century – German brand standards".



WAS DIE WELT FUNKT – HÖR MIT BLAUPUNKT





Blaupunkt Today

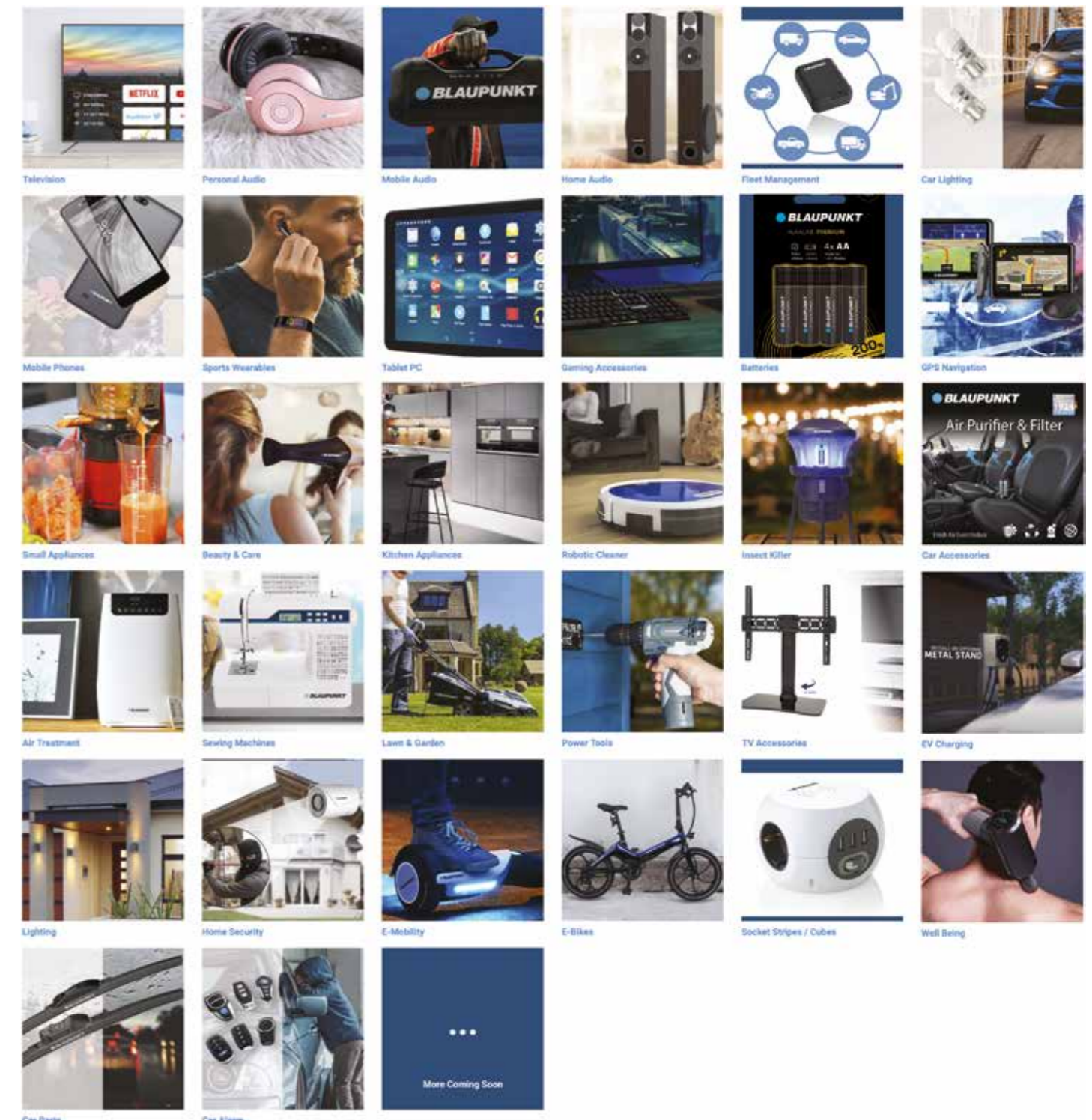
Today more than 30 carefully selected Competence Centers of Blaupunkt Global Brand Community offer the full set of Consumer Lifestyle products and beyond all around the globe.



Blaupunkt Brand Promise

Customers who buy a Blaupunkt product can expect:
Quality products at a fair price that perform as advertised.
 Blaupunkt is the one of the most trusted brands in the fields of consumer lifestyle, InCar Entertainment, and related categories.

Available Categories



BLAUPUNKT



Enjoy it.



Primary Batteries



up to **300%**
more energy^{*1}

LITHIUM ULTIMATE BATTERIES

Available sizes: AA - AAA - 9V

KEY FEATURES

- High quality and performance, ideal for energy-hungry appliances such as digital cameras, IoT devices, etc.
- Lasts 5x longer vs. average alkaline batteries.
- Works exceptionally well under extreme conditions and temperatures.
- Up to 10 years power protection (9V battery: 5 years).
- Anti-leak protection.
- 100% carton and eco-friendly packaging.



LITHIUM ULTIMATE BATTERIES

Available sizes: AA - AAA - 9V

FR6BUL/2CP



BATTERY

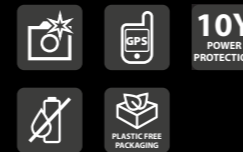
Size	AA
Diameter	14.5 mm
Height	50.5 mm
Weight	23.5 g

CSU

Width	85 mm
Height	120 mm
Depth	17 mm

EAN CSU 5410853069270

EAN carton 5410853069416



# batteries / CSU	2
# CSU / inner carton	12
# CSU / outer carton	60
# CSU / pallet	6900

FR03BUL/2CP



BATTERY

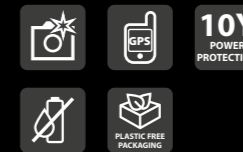
Size	AAA
Diameter	10.5 mm
Height	44.5 mm
Weight	11.3 g

CSU

Width	85 mm
Height	120 mm
Depth	12 mm

EAN CSU 5410853069287

EAN carton 5410853069423



# batteries / CSU	2
# CSU / inner carton	12
# CSU / outer carton	60
# CSU / pallet	9900

6FR61BUL/1CP



BATTERY

Size	9V
Width	25 mm
Height	17 mm
Length	48 mm
Weight	44.5 g

CSU

Width	85 mm
Height	120 mm
Depth	19 mm

EAN CSU 5410853067139

EAN carton 5410853067146



# batteries / CSU	1
# CSU / inner carton	12
# CSU / outer carton	60
# CSU / pallet	6480



ALKALINE PREMIUM

Available sizes: AA - AAA

KEY FEATURES

- Ideal power solution for commonly used devices like toys, radios, scales and torches.
- Reliable and dependable energy, every day again.
- Up to 10 years power protection.
- Anti-leak protection.
- 100% carton and eco-friendly packaging.



Enjoy it.

** Comparison according internal APS testings vs average zinc carbon batteries in 2020 IEC motorized toy modes. Results may differ by device and the way of usage.

ALKALINE PREMIUM

Available sizes: AA - AAA

LR6BPR/4CP



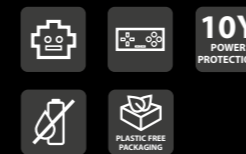
BATTERY

Size	AA
Diameter	14.5 mm
Height	50.5 mm
Weight	23.5 g

CSU

Width	85 mm
Height	120 mm
Depth	16.5 mm

EAN CSU	5410853065548
EAN carton	5410853065807



# batteries / CSU	4
# CSU / inner carton	12
# CSU / outer carton	60
# CSU / pallet	6900

LR6BPR/8HH



BATTERY

Size	AA
Diameter	14.5 mm
Height	50.5 mm
Weight	23.5 g

CSU

Width	115 mm
Height	92 mm
Depth	16 mm

EAN CSU	5410853069218
EAN carton	5410853069355



# batteries / CSU	8
# CSU / carton	20
# CSU / pallet	4480

LR6BPR/8CB



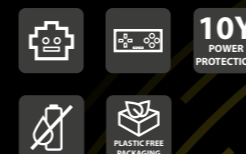
BATTERY

Size	AA
Diameter	14.5 mm
Height	50.5 mm
Weight	23.5 g

CSU

Width	115 mm
Height	53 mm
Depth	16 mm

EAN CSU	5410853069225
EAN carton	5410853069362



# batteries / CSU	8
# CSU / carton	20
# CSU / pallet	4480

LR6BPR/10CB 8+2



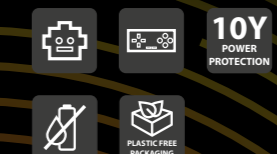
BATTERY

Size	AA
Diameter	14.5 mm
Height	50.5 mm
Weight	23.5 g

CSU

Width	145 mm
Height	53 mm
Depth	16 mm

EAN CSU	5410853069232
EAN carton	5410853069379



# batteries / CSU	10
# CSU / carton	20
# CSU / pallet	3680

Enjoy it.

LR03BPR/4CP



BATTERY

Size AAA
 Diameter 10.5 mm
 Height 44.5 mm
 Weight 11.3 g

CSU

Width 85 mm
 Height 120 mm
 Depth 12.5 mm

EAN CSU 5410853065555

EAN carton 5410853065814

batteries / CSU 4
 # CSU / inner carton 12
 # CSU / outer carton 60
 # CSU / pallet 10080



LR03BPR/8HH



BATTERY

Size AAA
 Diameter 10.5 mm
 Height 44.5 mm
 Weight 11.3 g

CSU

Width 85 mm
 Height 87 mm
 Depth 12 mm

EAN CSU 5410853069249

EAN carton 5410853069386

batteries / CSU 8
 # CSU / carton 20
 # CSU / pallet 8800



LR03BPR/8CB



BATTERY

Size AAA
 Diameter 10.5 mm
 Height 44.5 mm
 Weight 11.3 g

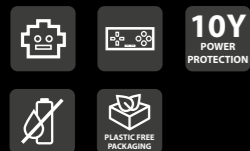
CSU

Width 85 mm
 Height 47 mm
 Depth 12 mm

EAN CSU 5410853069256

EAN carton 5410853069393

batteries / CSU 8
 # CSU / carton 20
 # CSU / pallet 8800



LR03BPR/10CB 8+2



BATTERY

Size AAA
 Diameter 10.5 mm
 Height 44.5 mm
 Weight 11.3 g

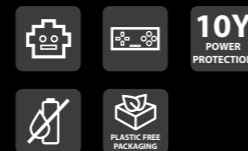
CSU

Width 107 mm
 Height 47 mm
 Depth 12 mm

EAN CSU 5410853069263

EAN carton 5410853069409

batteries / CSU 10
 # CSU / carton 20
 # CSU / pallet 7200



up to **200%**
 more energy¹⁾



ALKALINE POWER

Available sizes: AA - AAA - C - D - 9V



KEY FEATURES

- Ideal power solution for everyday appliances like wall clocks and TV remote controls.
- Reliable and dependable energy, every day again.
- Up to 7 years power protection (9V battery: 5 years).
- Anti-leak protection.
- 100% carton and eco-friendly packaging.

Enjoy it.

*1 Comparison according internal APS testings vs average zinc carbon batteries in low drain (Radio, clock, remote; 2020 IEC modes). Results may differ by device and the way of usage.

ALKALINE POWER

Available sizes: AA - AAA - C - D - 9V

LR6BPO/4CP



BATTERY

Size	AA
Diameter	14.5 mm
Height	50.5 mm
Weight	23.5 g

CSU

Width	85 mm
Height	120 mm
Depth	16.5 mm

EAN CSU	5410853065630
EAN carton	5410853065890



# batteries / CSU	4
# CSU / inner carton	12
# CSU / outer carton	60
# CSU / pallet	6900

LR6BPO/10HH



BATTERY

Size	AA
Diameter	14.5 mm
Height	50.5 mm
Weight	23.5 g

CSU

Width	144 mm
Height	92 mm
Depth	15 mm

EAN CSU	5410853065654
EAN carton	5410853065913



# batteries / CSU	10
# CSU / carton	20
# CSU / pallet	3680

LR6BPO/10CB 8+2



BATTERY

Size	AA
Diameter	14.5 mm
Height	50.5 mm
Weight	23.5 g

CSU

Width	145 mm
Height	53 mm
Depth	16 mm

EAN CSU	5410853069171
EAN carton	5410853069317



# batteries / CSU	10
# CSU / carton	20
# CSU / pallet	3680

LR6BPO/16CB



BATTERY

Size	AA
Diameter	14.5 mm
Height	50.5 mm
Weight	23.5 g

CSU

Width	115 mm
Height	53 mm
Depth	30 mm

EAN CSU	5410853069188
EAN carton	5410853069324



# batteries / CSU	16
# CSU / carton	12
# CSU / outer carton	2352

Enjoy it.

LR03BPO/4CP



BATTERY

Size AAA
Diameter 10.5 mm
Height 44.5 mm
Weight 11.3 g

CSU

Width 85 mm
Height 120 mm
Depth 12.5 mm

EAN CSU 5410853065647
EAN carton 5410853065906

batteries / CSU 4
CSU / inner carton 12
CSU / outer carton 60
CSU / pallet 10080



LR03BPO/10HH



BATTERY

Size AAA
Diameter 10.5 mm
Height 44.5 mm
Weight 11.3 g

CSU

Width 106 mm
Height 87 mm
Depth 11 mm

EAN CSU 5410853065661
EAN carton 5410853065920

batteries / CSU 10
CSU / carton 20
CSU / pallet 7200



LR03BPO/10CB 8+2



BATTERY

Size AAA
Diameter 10.5 mm
Height 44.5 mm
Weight 11.3 g

CSU

Width 107 mm
Height 47 mm
Depth 12 mm

EAN CSU 5410853069195
EAN carton 5410853069331

batteries / CSU 10
CSU / carton 20
CSU / pallet 7200



LR03BPO/16CB



BATTERY

Size AAA
Diameter 10.5 mm
Height 44.5 mm
Weight 11.3 g

CSU

Width 107 mm
Height 47 mm
Depth 23 mm

EAN CSU 5410853069201
EAN carton 5410853069348

batteries / CSU 16
CSU / carton 12
CSU / pallet 4416



LR14BPO/2CP



BATTERY

Size C
Diameter 26 mm
Height 50 mm
Weight 68 g

CSU

Width 85 mm
Height 120 mm
Depth 28 mm

EAN CSU 5410853065623
EAN carton 5410853065883

batteries / CSU 2
CSU / inner carton 12
CSU / outer carton 60
CSU / pallet 4500



LR20BPO/2CP



BATTERY

Size D
Diameter 33 mm
Height 61.5 mm
Weight 141 g

CSU

Width 92 mm
Height 120 mm
Depth 35 mm

EAN CSU 5410853065616
EAN carton 5410853065876

batteries / CSU 2
CSU / inner carton 12
CSU / outer carton 60
CSU / pallet 2160



6LR61BPO/1CP



BATTERY

Size 9V
Width 25 mm
Height 17 mm
Depth 48 mm
Weight 44.5 g

CSU

Width 85 mm
Height 120 mm
Depth 19 mm

EAN CSU 5410853065609
EAN carton 5410853065869

batteries / CSU 1
CSU / inner carton 12
CSU / outer carton 60
CSU / pallet 6480



Enjoy it.

*1 Comparison according internal APS testings vs average zinc carbon batteries in low drain (Radio, clock, remote; 2020 IEC modes). Results may differ by device and the way of usage.

Enjoy it.



ZINC CARBON **ESSENTIAL**

Available sizes: AA - AAA - C - D - 9V

KEY FEATURES

- Value for money power source for low drain appliances such as wall clocks and TV remote controls.
- Simple and reliable technology.
- 100% carton and eco-friendly packaging.



ZINC CARBON **ESSENTIAL**

Available sizes: AA - AAA - C - D - 9V

R6BES/4CP



BATTERY

Size	AA
Diameter	14.5 mm
Height	50.5 mm
Weight	16.6 g

CSU

Width	83 mm
Height	120 mm
Depth	16 mm

EAN CSU 5410853065722

EAN carton 5410853065982



# batteries / CSU	4
# CSU / inner carton	12
# CSU / outer carton	60
# CSU / pallet	6840

R6BES/8HH



BATTERY

Size	AA
Diameter	14.5 mm
Height	50.5 mm
Weight	16.6 g

CSU

Width	134 mm
Height	100 mm
Depth	16 mm

EAN CSU 5410853069157

EAN carton 5410853069294



# batteries / CSU	8
# CSU / carton	20
# CSU / pallet	3360

R03BES/4CP



BATTERY

Size	AAA
Diameter	10.5 mm
Height	44.5 mm
Weight	8.5 g

CSU

Width	83 mm
Height	120 mm
Depth	12 mm

EAN CSU 5410853065739

EAN carton 5410853065999



# batteries / CSU	4
# CSU / inner carton	12
# CSU / outer carton	60
# CSU / pallet	10320

R03BES/8HH



BATTERY

Size	AAA
Diameter	10.5 mm
Height	44.5 mm
Weight	8.5 g

CSU

Width	87 mm
Height	92 mm
Depth	12 mm

EAN CSU 5410853069164

EAN carton 5410853069300



# batteries / CSU	8
# CSU / carton	20
# CSU / pallet	6480

R14BES/2CP



BATTERY

Size C
 Diameter 26.2 mm
 Height 50 mm
 Weight 46.2 g

CSU

Width 83 mm
 Height 120 mm
 Depth 27 mm

EAN CSU 5410853065715

EAN carton 5410853065975

batteries / CSU 2
 # CSU / inner carton 12
 # CSU / outer carton 48
 # CSU / pallet 4608



R20BES/2CP



BATTERY

Size D
 Diameter 34.2 mm
 Height 61.5 mm
 Weight 95.8 g

CSU

Width 83 mm
 Height 120 mm
 Depth 35 mm

EAN CSU 5410853065708

EAN carton 5410853065968

batteries / CSU 2
 # CSU / inner carton 12
 # CSU / outer carton 48
 # CSU / pallet 2736



6F22BES/1CP



BATTERY

Size 9V
 Width 26.5 mm
 Height 48.5 mm
 Depth 17.5 mm
 Weight 34.5 g

CSU

Width 83 mm
 Height 120 mm
 Depth 18 mm

EAN CSU 5410853065692

EAN carton 5410853065951

batteries / CSU 1
 # CSU / inner carton 12
 # CSU / outer carton 48
 # CSU / pallet 6240



Enjoy it.

Enjoy it.



Specialty Batteries



COIN LITHIUM

Available sizes: CR2032 - CR2025 - CR2016 | 3V

KEY FEATURES

- High voltage in a small battery.
- Reliable power, even in extreme temperatures (-30°C ~ +60°C).
- Up to 10 years power protection.
- No mercury added.
- Child-resistant packaging.



CR2032/1BP



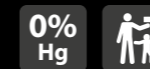
BATTERY
 Diameter 20 mm
 Height 3.2 mm
 Weight 2.9 g

CSU
 Width 50 mm
 Height 95 mm
 Depth 4.25 mm

EAN CSU 5410853066101
EAN carton 5410853066316



batteries / CSU 1
 # CSU / inner carton 12
 # CSU / outer carton 120
 # CSU / pallet 28800



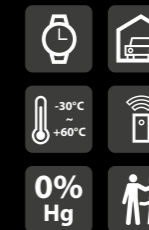
CR2032/2BP



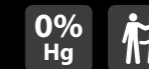
BATTERY
 Diameter 20 mm
 Height 3.2 mm
 Weight 2.9 g

CSU
 Width 50 mm
 Height 95 mm
 Depth 4.25 mm

EAN CSU 5410853066118
EAN carton 5410853066323



batteries / CSU 2
 # CSU / inner carton 12
 # CSU / outer carton 120
 # CSU / pallet 28800



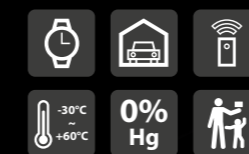
CR2032/4BP



BATTERY
 Diameter 20 mm
 Height 3.2 mm
 Weight 2.9 g

CSU
 Width 83 mm
 Height 120 mm
 Depth 4.25 mm

EAN CSU 5410853070238
EAN carton 5410853070344



batteries / CSU 4
 # CSU / inner carton 12
 # CSU / outer carton 120
 # CSU / pallet 6720



CR2025/1BP



BATTERY

Diameter 20 mm
Height 2.5 mm
Weight 2.3 g

CSU

Width 50 mm
Height 95 mm
Depth 4.25 mm

EAN CSU 5410853066071

EAN carton 5410853066286



batteries / CSU 1



CSU / inner carton 12

CSU / outer carton 120



CSU / pallet 17280

CR2025/2BP



BATTERY

Diameter 20 mm
Height 2.5 mm
Weight 2.3 g

CSU

Width 50 mm
Height 95 mm
Depth 4.25 mm

EAN CSU 5410853066088

EAN carton 5410853066293



batteries / CSU 2



CSU / inner carton 12

CSU / outer carton 120



CSU / pallet 8640

CR2016/1BP



BATTERY

Diameter 20 mm
Height 1.6 mm
Weight 1.7 g

CSU

Width 50 mm
Height 95 mm
Depth 4.25 mm

EAN CSU 5410853066040

EAN carton 5410853066255



batteries / CSU 1



CSU / inner carton 12

CSU / outer carton 120



CSU / pallet 8640

CR2016/2BP



BATTERY

Diameter 20 mm
Height 1.6 mm
Weight 1.7 g

CSU

Width 50 mm
Height 95 mm
Depth 4.25 mm

EAN CSU 5410853066057

EAN carton 5410853066262



batteries / CSU 2



CSU / inner carton 12

CSU / outer carton 120



CSU / pallet 8640

CR2025/4BP



BATTERY

Diameter 20 mm
Height 2.5 mm
Weight 2.3 g

CSU

Width 83 mm
Height 120 mm
Depth 4.25 mm

EAN CSU 5410853070214

EAN carton 5410853070320



batteries / CSU 4



CSU / inner carton 12

CSU / outer carton 120

CSU / pallet 6720

CR2016/4BP



BATTERY

Diameter 20 mm
Height 1.6 mm
Weight 1.6 g

CSU

Width 83 mm
Height 120 mm
Depth 4.25 mm

EAN CSU 5410853070191

EAN carton 5410853070306



batteries / CSU 4



CSU / inner carton 12

CSU / outer carton 120

CSU / pallet 6720



CYLINDRICAL LITHIUM

Available sizes: CR123 - CR2 | 3V



KEY FEATURES

- High energy density (lithium power).
- Reliable power, even in extreme temperatures (-30°C ~ +60°C).
- Up to 10 years power protection.
- Rapid camera flash recovery time.

CYLINDRICAL LITHIUM

Available sizes: CR123 - CR2

CR123/1BP



BATTERY

Diameter 16.5 mm
Height 34.5 mm
Weight 17 g

CSU

Width 50 mm
Height 95 mm
Depth 18.5 mm

EAN CSU 5410853066132

EAN carton 5410853066347



batteries / CSU 1
CSU / inner carton 10
CSU / outer carton 100
CSU / pallet 10800

CR2/1BP



BATTERY

Diameter 15.6 mm
Height 27 mm
Weight 11.1 g

CSU

Width 50 mm
Height 95 mm
Depth 18.5 mm

EAN CSU 5410853066156

EAN carton 5410853066361



batteries / CSU 1
CSU / inner carton 10
CSU / outer carton 100
CSU / pallet 10800



MICRO ALKALINE

Available sizes: 23A - LR1 - LR44 | 12 V - 1.5 V



KEY FEATURES

- Optimal and stable discharge.
- Anti-leak protection due to advanced sealing technique.
- Up to 3 years power protection.
- No mercury added.

MICRO ALKALINE

Available sizes: 23A - LR1 - LR44

23A/1BP



BATTERY

Diameter 10 mm
Height 28 mm
Weight 7.5 g

CSU

Width 50 mm
Height 95 mm
Depth 14 mm

EAN CSU 5410853066187

EAN carton 5410853066392



batteries / CSU 1
CSU / inner carton 10
CSU / outer carton 100
CSU / pallet 7600

LR1/1BP



BATTERY

Diameter 12 mm
Height 30.2 mm
Weight 9.2 g

CSU

Width 50 mm
Height 95 mm
Depth 14 mm

EAN CSU 5410853066170

EAN carton 5410853066385



batteries / CSU 1
CSU / inner carton 10
CSU / outer carton 100
CSU / pallet 7600

LR44/1BP



BATTERY

Diameter 11.6 mm
Height 5.4 mm
Weight 2 g

CSU

Width 50 mm
Height 95 mm
Depth 6.5 mm

EAN CSU 5410853066194

EAN carton 5410853066408



batteries / CSU 1
CSU / inner carton 12
CSU / outer carton 120
CSU / pallet 19200



up to **150%**
more energy*1

ZINC AIR HEARING AID

for over-ear & in-ear hearing aid devices | 1.4 V

KEY FEATURES

- Long lasting battery.
- For over-ear (PR10 - PR312) or in-ear (PR13) hearing aid devices.
- Optimised battery for the latest generation of Bluetooth hearing aid devices.
- Reliable power in various temperature conditions.



ZINC AIR HEARING AID

for over-ear & in-ear hearing aid devices

PR13(48)/6LB



BATTERY

Diameter 7.9 mm
Height 5.4 mm
Weight 0.83 g

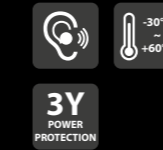
CSU

Width 48 mm
Height 94 mm
Depth 6.6 mm

EAN CSU 5410853066217

EAN carton 5410853066422

batteries / CSU 6
CSU / inner carton 10
CSU / outer carton 50
CSU / pallet 12000



PR230(10)/6LB



BATTERY

Diameter 5.8 mm
Height 3.6 mm
Weight 0.3 g

CSU

Width 48 mm
Height 94 mm
Depth 4.7 mm

EAN CSU 5410853066224

EAN carton 5410853066439

batteries / CSU 6
CSU / inner carton 10
CSU / outer carton 50
CSU / pallet 16000



PR312(41)/6LB



BATTERY

Diameter 7.9 mm
Height 3.6 mm
Weight 0.58 g

CSU

Width 48 mm
Height 94 mm
Depth 4.7 mm

EAN CSU 5410853066231

EAN carton 5410853066446

batteries / CSU 6
CSU / inner carton 10
CSU / outer carton 50
CSU / pallet 16000



● BLAUPUNKT



Enjoy it.

Rechargeable Batteries
& Chargers



RECHARGEABLE BATTERIES

Available sizes: AA - AAA | 1.2 V

HR6-2000BL/4CP



BATTERY

Size	AA
Diameter	14.5 mm
Height	50.5 mm
Weight	29 g
Capacity	2000 mAh

CSU

Width	85 mm
Height	120 mm
Depth	16 mm

EAN CSU 5410853065507

EAN carton 5410853066644

# batteries / CSU	4
# CSU / inner carton	12
# CSU / outer carton	48
# CSU / pallet	6528



HR03-850BL/4CP



BATTERY

Size	AAA
Diameter	10.5 mm
Height	44.5 mm
Weight	11.3 g
Capacity	850 mAh

CSU

Width	85 mm
Height	120 mm
Depth	12 mm

EAN CSU 5410853066545

EAN carton 5410853066682

# batteries / CSU	4
# CSU / inner carton	12
# CSU / outer carton	48
# CSU / pallet	9120



RECHARGEABLE BATTERIES

Available sizes: AA - AAA | 1.2 V

KEY FEATURES

- Pre-charged, so ready to use straight after purchase.
- Batteries stay charged when not used, even after 1 year of storage (in room temperature).
- Combines the convenience of disposable batteries with the performance and cost benefit of rechargeable batteries.
- 2000 mAh (AA) - 850 mAh (AAA):
Ideal battery for frequently used appliances like toys.
- 1300 mAh (AA) - 650 mAh (AAA):
Ideal battery for commonly used appliances like clocks and tv remote controls.



Enjoy it.

HR6-1300BL/4CP



BATTERY

Size	AA
Diameter	14.5 mm
Height	50.5 mm
Weight	29 g
Capacity	1300 mAh

CSU

Width	85 mm
Height	120 mm
Depth	16 mm

EAN CSU 5410853066521

EAN carton 5410853066668

# batteries / CSU	4
# CSU / inner carton	12
# CSU / outer carton	48
# CSU / pallet	6528



HR03-650BL/4CP



BATTERY

Size	AAA
Diameter	10.5 mm
Height	44.5 mm
Weight	11.3 g
Capacity	650 mAh

CSU

Width	85 mm
Height	120 mm
Depth	12 mm

EAN CSU 5410853066569

EAN carton 5410853066705

# batteries / CSU	4
# CSU / inner carton	12
# CSU / outer carton	48
# CSU / pallet	9120



Enjoy it.



BATTERY CHARGERS

Advanced LCD charger - Standard charger



KEY FEATURES

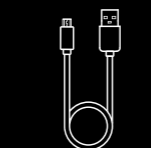
- For 1-2 or 1-4 Ni-MH batteries (AA or AAA).
- USB cable (50 cm) included.
- Individual charging control (- Delta V).
- Reverse polarity / bad cell / thermal / short circuit protection.
- 100% plastic free packaging.

BATTERY CHARGERS

Advanced LCD charger - Standard charger

Advanced LCD charger

BL-C4PROCH



Including USB-A to Micro USB cable (50 cm)



CHARGER

Including 4 batteries AA 2000 mAh
Charging time approx. 1 hour (4 cells)

Charges 1 - 4 Ni-MH batteries
Individual charging control (- Delta V)
Alkaline battery / bad cell detection
Overheat protection (thermal sensor)
Short circuit protection

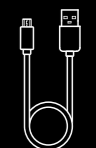
W x H x D	69.5 x 100 x 23 mm
Input	Micro USB / USB C 5V / 2A
Output	AA 1pc: 3600 mA AA 2pcs: 1800 mA AA 3-4pcs: 900 mA AAA 1pc: 1800 mA AAA 2 pcs: 900 mA AAA 3-4 pcs: 450 mA

CSU

W x H x D	83 x 147 x 31 mm
EAN CSU	5410853069591
EAN carton	5410853069669
# chargers / CSU	1

Standard charger

BL-C4CH



Including USB-A to Micro USB cable (50 cm)



CHARGER

Including 4 batteries AA 2000 mAh
Charging time approx. 8-10 hours (4 cells)

Charges 1 - 4 Ni-MH batteries
Individual charging control (- Delta V)
Alkaline battery / bad cell detection
Short circuit protection

W x H x D	66.5 x 98 x 23 mm
Input	Micro USB 5V / 1A
Output	AA 1-4pcs: 300 mA AAA 1-4 pcs: 120 mA

CSU

W x H x D	83 x 147 x 31 mm
EAN CSU	5410853069584
EAN carton	5410853069652
# chargers / CSU	1

 **BLAUPUNKT**



Enjoy it.



Power banks

Enjoy it.



POWER BANKS

20K - 10K wireless - 10K - 5K



Enjoy it.

POWER BANKS

20K - 10K wireless - 10K - 5K

POWER BANK 20000 mAh



POWER BANK

Capacity 20000 mAh
 Power Up to 20 W
 Charges 4X faster than a conventional power bank

Smartphone charges 4x
 Tablet charges 2x
 Laptop charges 1x
 Flight proof
 Built-in safeties

W x H x D 78 x 160 x 23 mm
 Input USB C 5V/3 A
 9V/2A 12V/1.5 A
 Output USB C 5V/3 A
 9V/2A 12V/1.5 A
 2x USB A 5V/2.4 A
 9V/2A 12V/1.5 A

Power bank recharge time: 6.5 hours

CSU

W x H x D 105 x 210 x 30 mm

EAN CSU 5410853069560
 EAN carton 5410853069638

power banks / CSU 1

POWER BANK 10000 mAh with WIRELESS CHARGING



POWER BANK

Capacity 10000 mAh
 Power Up to 20 W
 Wireless 5W / 7.5W / 10 W
 Charges 4X faster than a conventional power bank

Smartphone charges 2x
 Tablet charges 1x
 Laptop charges —
 Flight proof
 Built-in safeties

W x H x D 73 x 144 x 17.3 mm
 Input USB C 5V/3 A 9V/2.2 A
 Output USB C 5V/3 A
 9V/2.22 A 12V/1.67 A
 USB A Quick Charge 3
 5v/2.4 A 9V/2A 12V/1.5 A

Power bank recharge time: 3.5 hours

CSU

W x H x D 100 x 190 x 25 mm

EAN CSU 5410853069553
 EAN carton 5410853069621

power banks / CSU 1

Enjoy it.

POWER BANK 10000 mAh



POWER BANK

Capacity 10000 mAh
 Power Up to 20 W
 Charges 4X faster than a conventional power bank

Smartphone charges 2x
 Tablet charges 1x
 Laptop charges —
 Flight proof
 Built-in safeties

W x H x D 73 x 141 x 15.2 mm
 Input USB C 5 V / 3 A 9 V / 2 A
 Output USB C 5 V / 3 A
 9 V / 2 A 12 V / 1.5 A
 2x USB A 5 V / 2.4 A
 9 V / 2 A 12 V / 1.5 A

Power bank recharge time: 3.5 hours

CSU

W x H x D 10 x 197 x 21 mm

EAN CSU 5410853069546

EAN carton 5410853069614

power banks / CSU 1

POWER BANK 5000 mAh



POWER BANK

Capacity 5000 mAh
 Power Up to 20 W
 Charges 4X faster than a conventional power bank

Smartphone charges 1x
 Tablet charges —
 Laptop charges —
 Flight proof
 Built-in safeties

W x H x D 70 x 131 x 10 mm
 Input USB C 5 V / 2.4 A
 Output USB C 5 V / 2.4 A
 USB A 5 V / 2.4 A

Power bank recharge time: 2 hours

CSU

W x H x D 100 x 187 x 20 mm

EAN CSU 5410853069539

EAN carton 5410853069607

power banks / CSU 1





● BLAUPUNKT

MAKE THE BEST CHOICE WITH
● BLAUPUNKT

MAKE THE BEST CHOICE WITH
● BLAUPUNKT

Enjoy it.

1924 GERMANY

100 YEARS

Enjoy it.

Displays & POS materials



DISPLAYS

Floor displays | Counter displays
Permanent displays | Promo displays

Counter display example



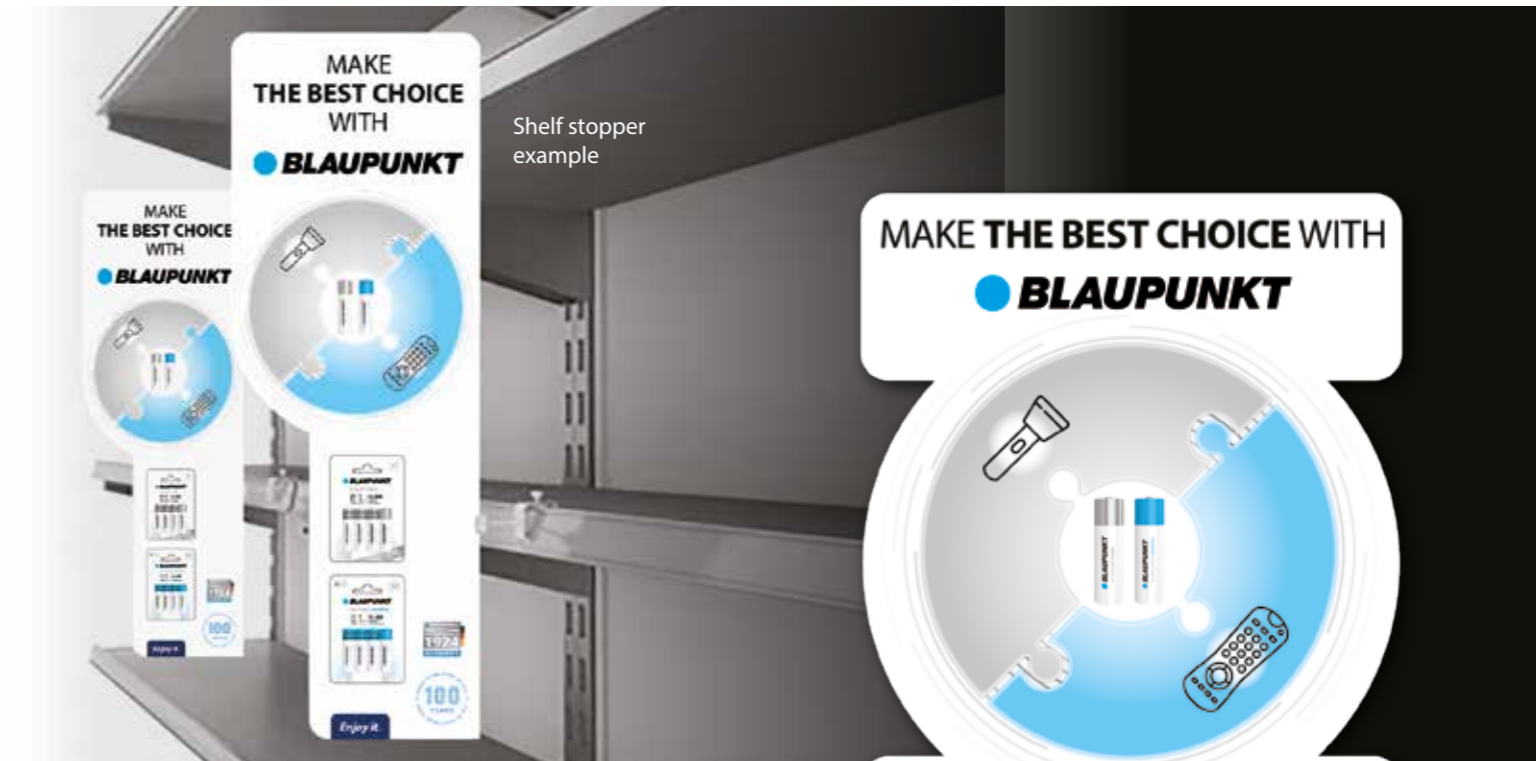
Carton floor display example



Permanent floor display example

Contact
Advanced Power Solutions
to check possibilities

Enjoy it.



Shelf stopper example



Sticker example



POS MATERIALS

Arch | Totem | Wobbler | Poster | Shelf stopper
Online banners | etc.



Totem example



Poster example



Wobbler example



Online banner example

Contact
Advanced Power Solutions
to check possibilities

Enjoy it.

Enjoy it.